

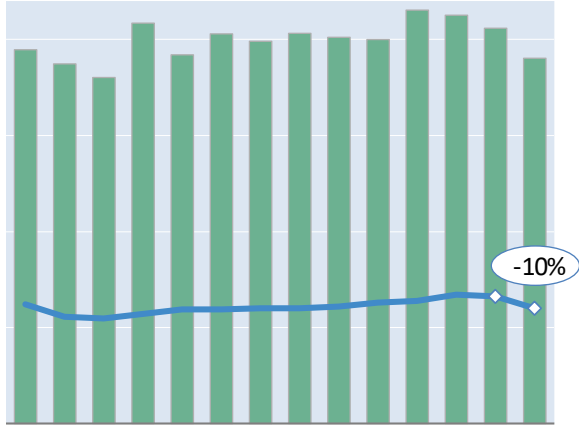
Actual Yields against Volume Development

Latest 14 months

— Actual yield including charges (in USD)

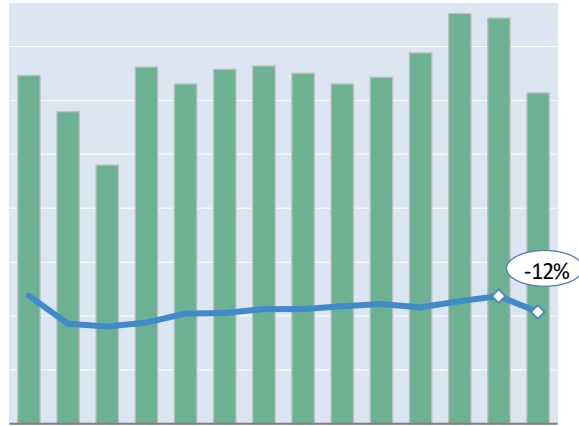
█ Chargeable weight development

Worldwide



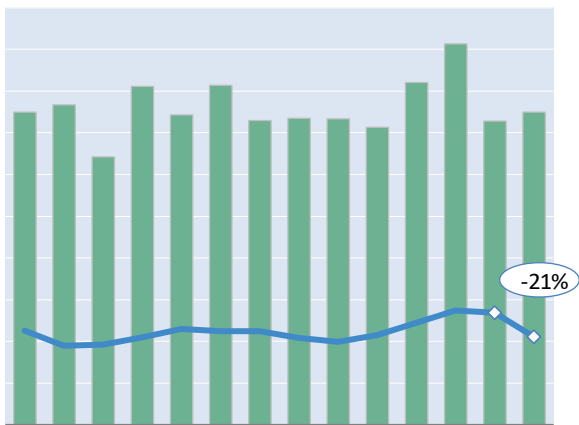
D J F M A M J J A S O N D J
Dec '23 = \$2.54 Dec '24 = \$2.71 Jan '25 = \$2.45

Hong Kong to USA



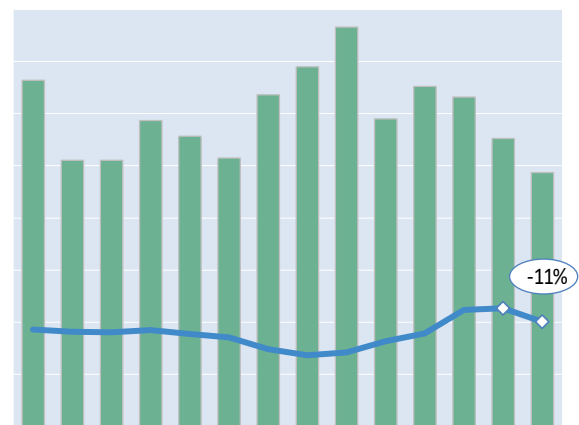
D J F M A M J J A S O N D J
Dec '23 = \$6.10 Dec '24 = \$6.08 Jan '25 = \$5.33

Shanghai to Germany



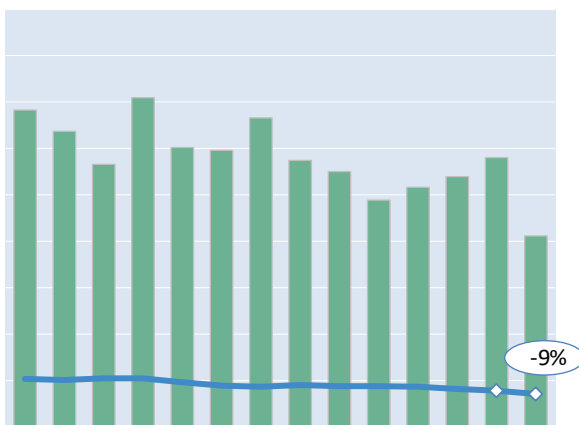
D J F M A M J J A S O N D J
Dec '23 = \$4.08 Dec '24 = \$4.84 Jan '25 = \$3.80

Amsterdam to USA



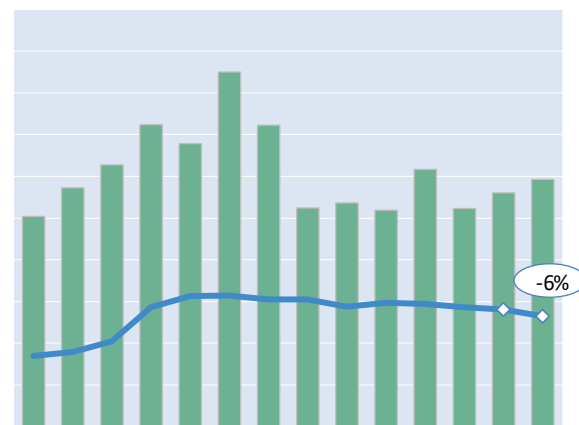
D J F M A M J J A S O N D J
Dec '23 = \$2.09 Dec '24 = \$2.55 Jan '25 = \$2.26

Frankfurt to China



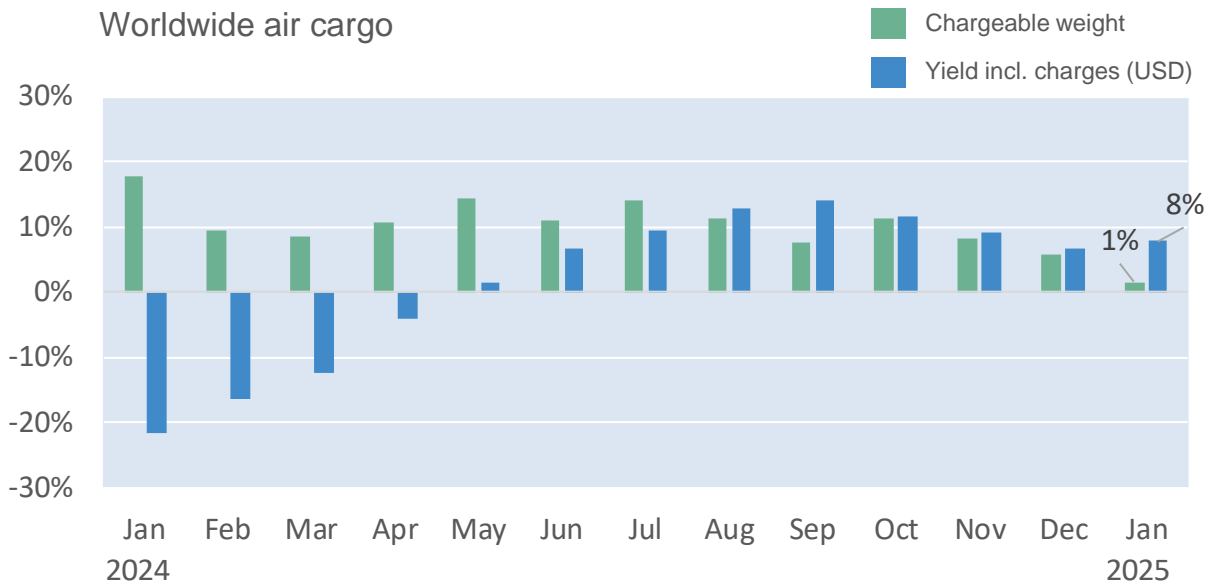
D J F M A M J J A S O N D J
Dec '23 = \$1.03 Dec '24 = \$0.78 Jan '25 = \$0.71

Mumbai to UK



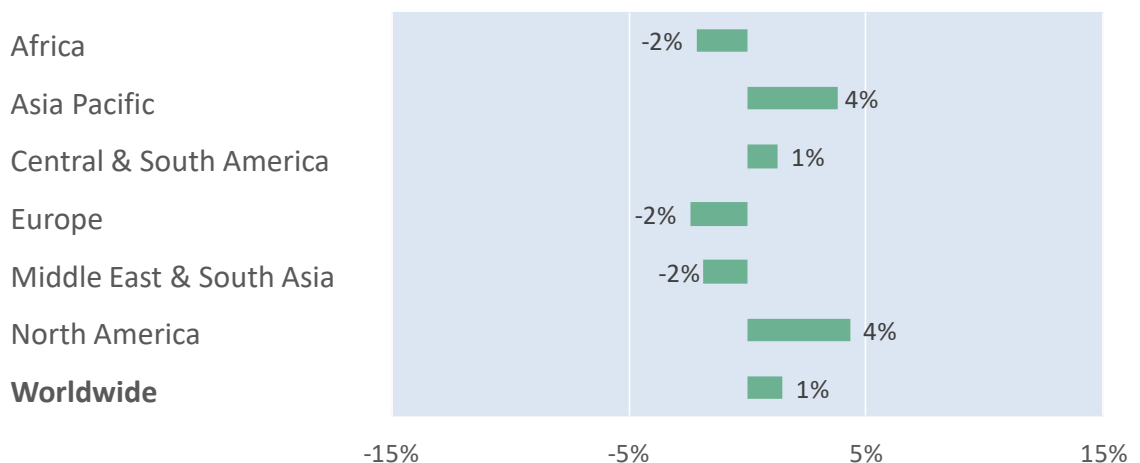
D J F M A M J J A S O N D J
Dec '23 = \$1.53 Dec '24 = \$2.53 Jan '25 = \$2.38

Monthly Change Year-on-Year - Weight and Yield



Monthly Change Year-on-Year – Weight per Origin Region

Chargeable weight (January 2025)



Monthly Change Year-on-Year – Weight per Product Category

Chargeable weight (January 2025)

