

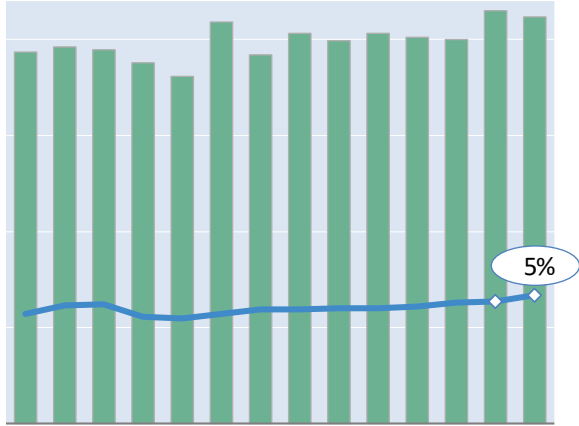
Actual Yields against Volume Development

Latest 14 months

— Actual yield including charges (in USD)

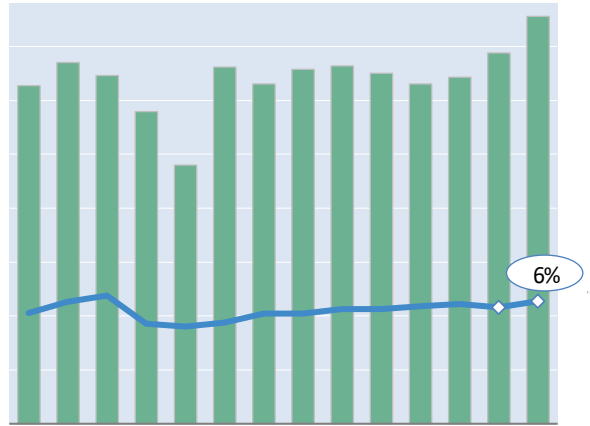
■ Chargeable weight development

Worldwide



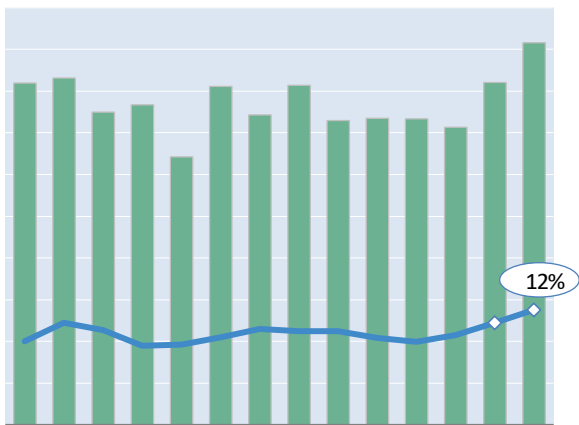
Oct '23 = \$2.34 Oct '24 = \$2.61 Nov '24 = \$2.74

Hong Kong to USA



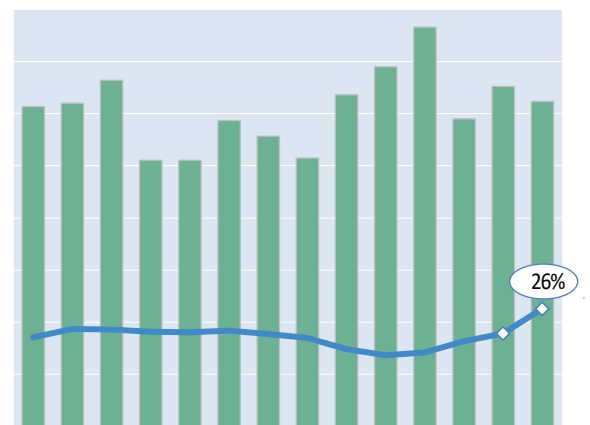
Oct '23 = \$5.28 Oct '24 = \$5.53 Nov '24 = \$5.84

Shanghai to Germany



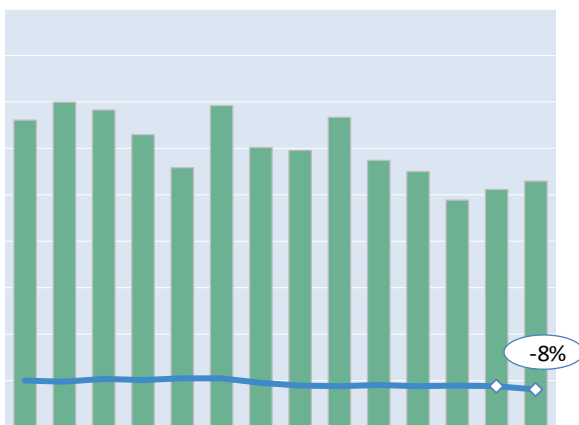
Oct '23 = \$3.61 Oct '24 = \$4.41 Nov '24 = \$4.96

Amsterdam to USA



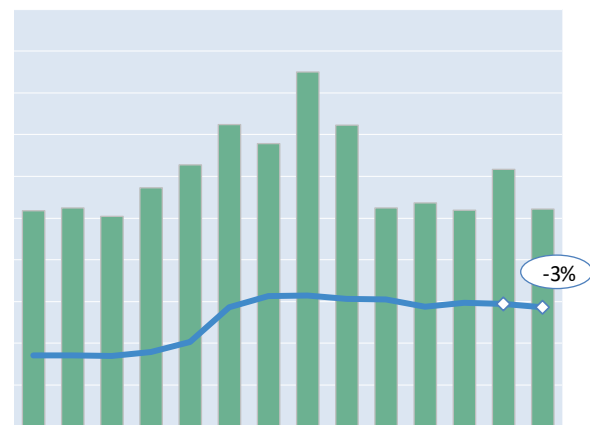
Oct '23 = \$1.93 Oct '24 = \$2.01 Nov '24 = \$2.54

Frankfurt to China



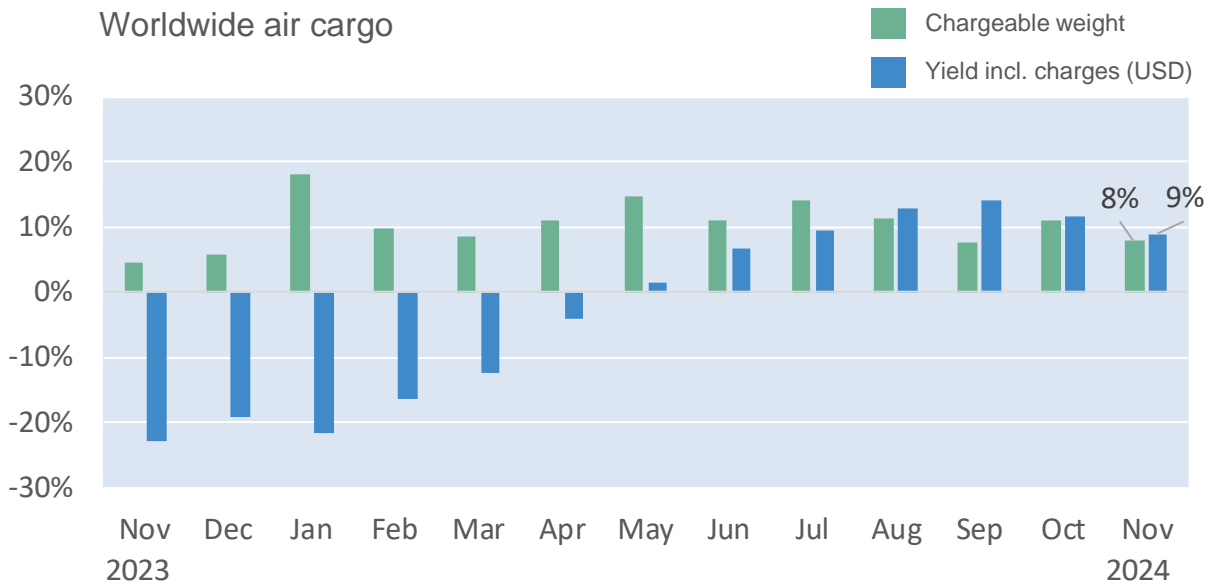
Oct '23 = \$1.00 Oct '24 = \$0.88 Nov '24 = \$0.81

Mumbai to UK



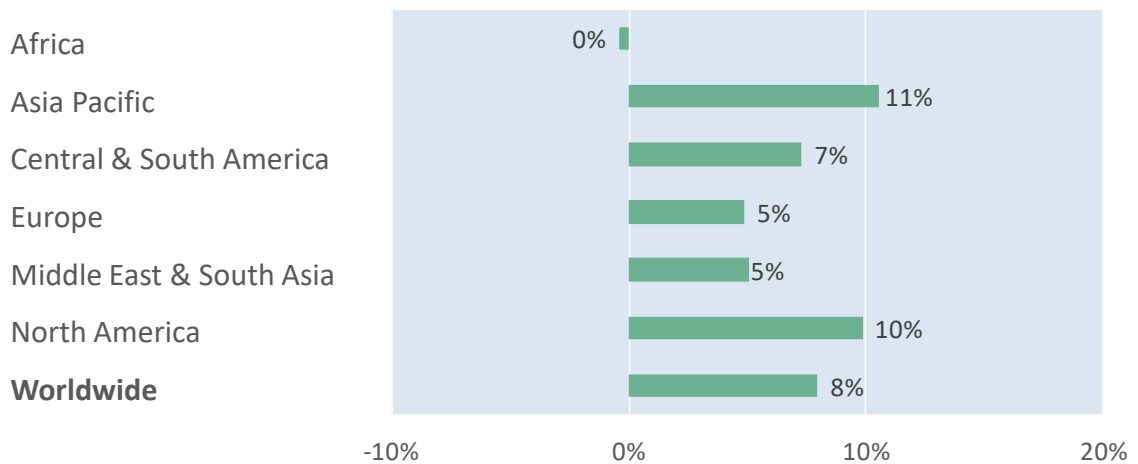
Oct '23 = \$1.54 Oct '24 = \$2.65 Nov '24 = \$2.58

Monthly Change Year-on-Year - Weight and Yield



Monthly Change Year-on-Year – Weight per Origin Region

Chargeable weight (November 2024)



Monthly Change Year-on-Year – Weight per Product Category

Chargeable weight (November 2024)

