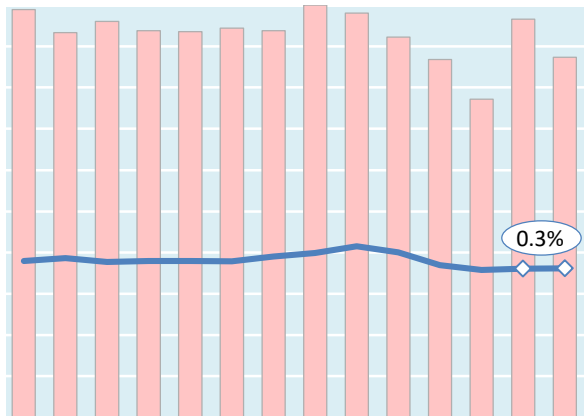


Actual Yields against Volume Development

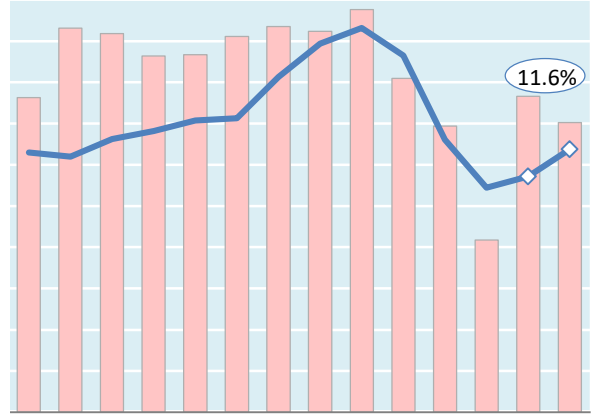
Latest 14 months — Actual yield including charges (in USD) — Chargeable weight development

Worldwide



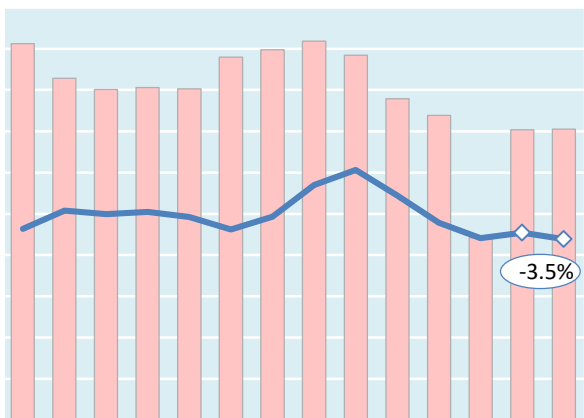
Mar '18 = \$1.90 Mar '19 = \$1.80 Apr '19 = \$1.81

Hong Kong to USA



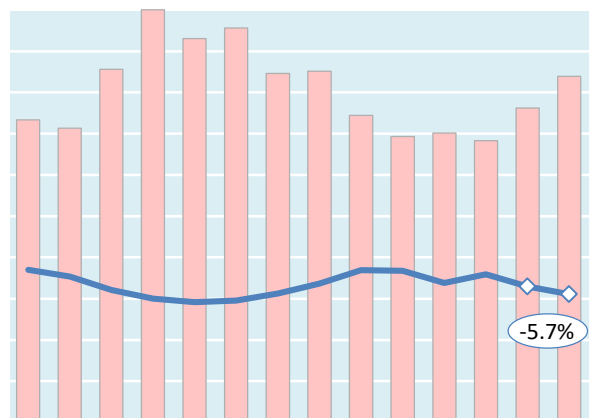
Mar '18 = \$3.15 Mar '19 = \$2.86 Apr '19 = \$3.19

Shanghai to Germany



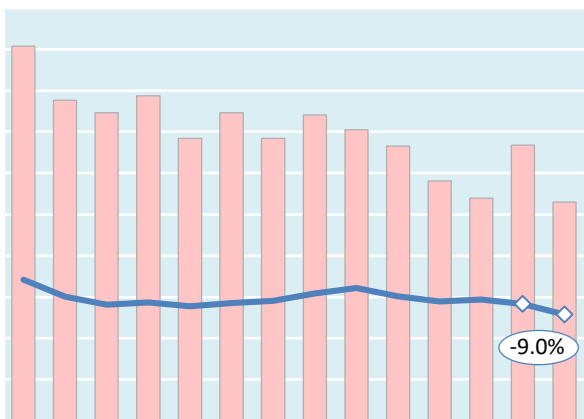
Mar '18 = \$2.32 Mar '19 = \$2.27 Apr '19 = \$2.19

Amsterdam to USA



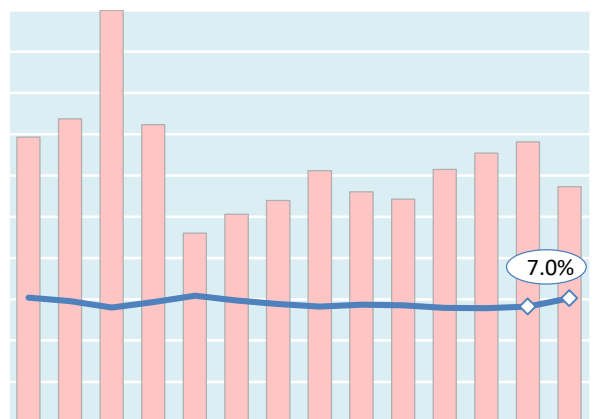
Mar '18 = \$1.85 Mar '19 = \$1.65 Apr '19 = \$1.55

Frankfurt to China



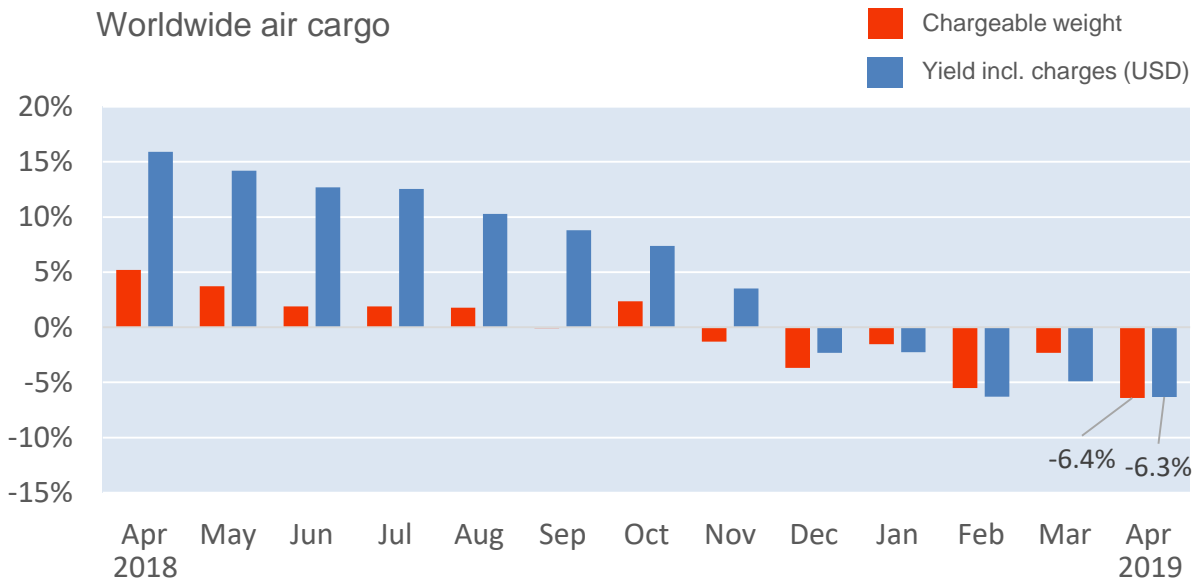
Mar '18 = \$1.71 Mar '19 = \$1.41 Apr '19 = \$1.29

Mumbai to UK



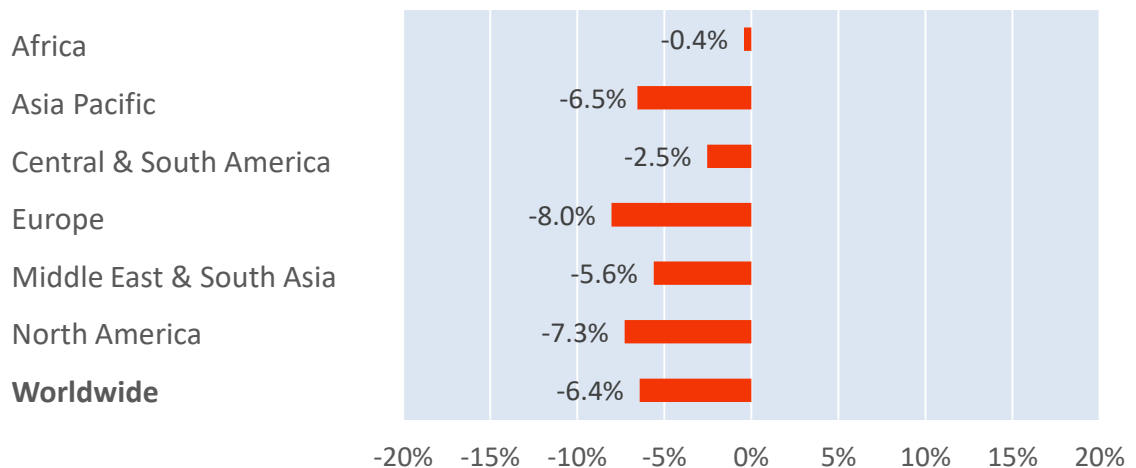
Mar '18 = \$1.52 Mar '19 = \$1.41 Apr '19 = \$1.51

Monthly Change Year-on-Year - Weight and Yield



Monthly Change Year-on-Year – Weight per Origin Region

Chargeable weight (April 2019)



Monthly Change Year-on-Year – Weight per Product Category

Chargeable weight (April 2019)

