

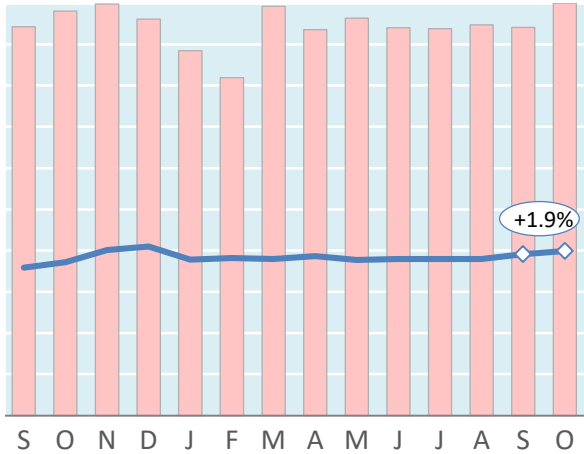
Actual Yields against Volume Development

Latest 14 months

— Actual yield including charges (in USD)

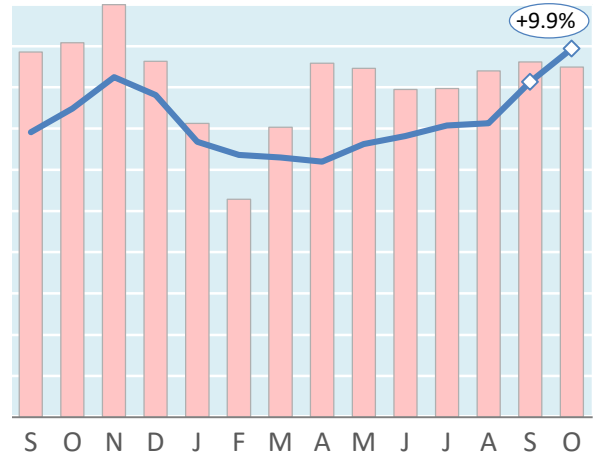
█ Chargeable weight development

Worldwide



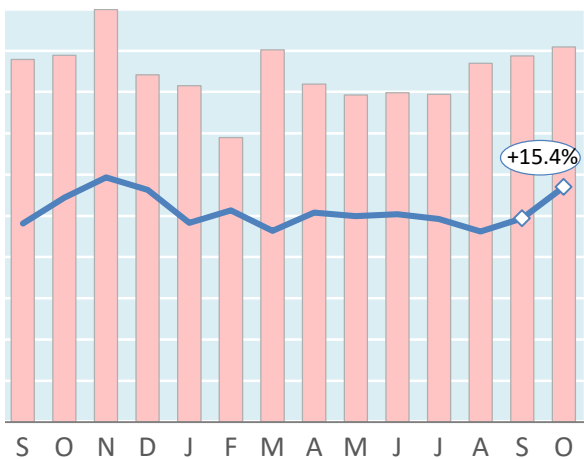
Sep '17 = \$1.79 Sep '18 = \$1.96 Oct '18 = \$1.99

Hong Kong to USA



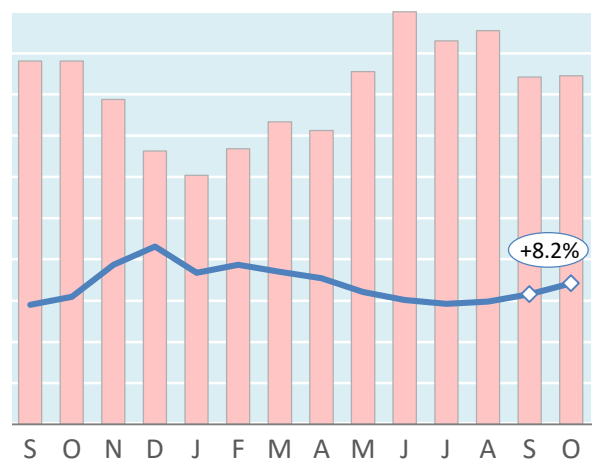
Sep '17 = \$3.46 Sep '18 = \$4.06 Oct '18 = \$4.47

Shanghai to Germany



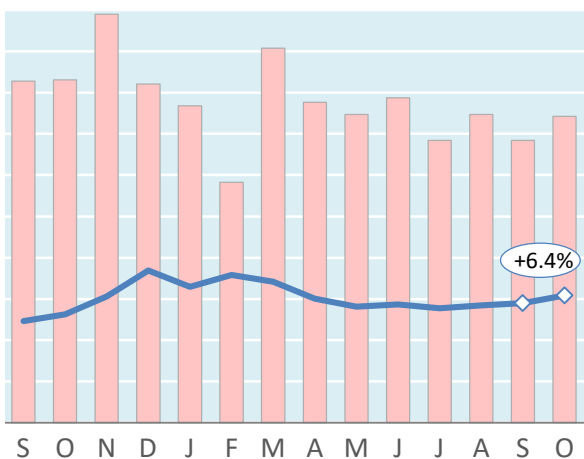
Sep '17 = \$2.41 Sep '18 = \$2.47 Oct '18 = \$2.85

Amsterdam to USA



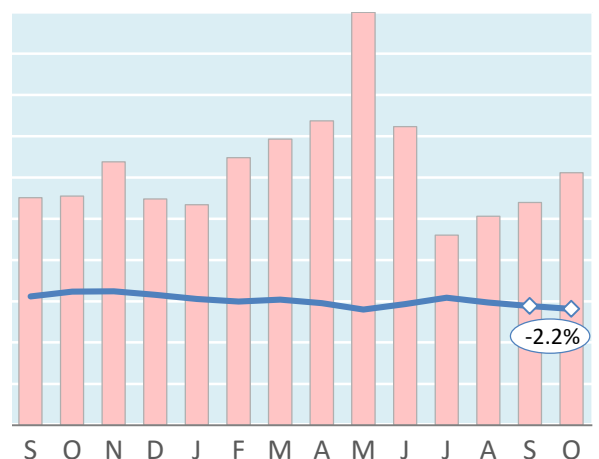
Sep '17 = \$1.45 Sep '18 = \$1.58 Oct '18 = \$1.71

Frankfurt to China



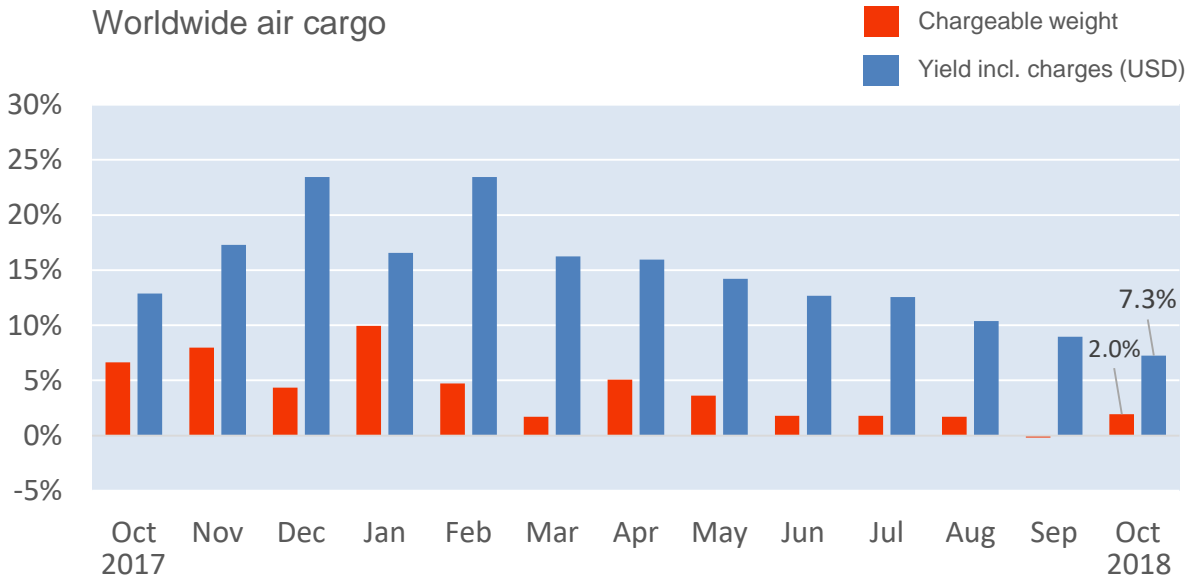
Sep '17 = \$1.23 Sep '18 = \$1.45 Oct '18 = \$1.54

Mumbai to UK



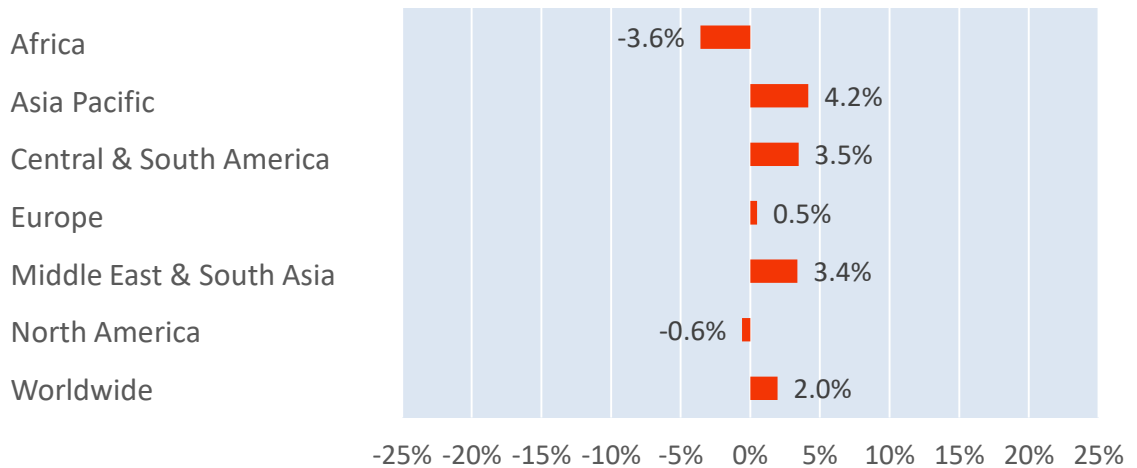
Sep '17 = \$1.56 Sep '18 = \$1.44 Oct '18 = \$1.41

Monthly Change Year-on-Year - Weight and Yield



Monthly Change Year-on-Year – Weight per Origin Region

Chargeable weight (October 2018)



Monthly Change Year-on-Year – Weight per Product Category

Chargeable weight (October 2018)

