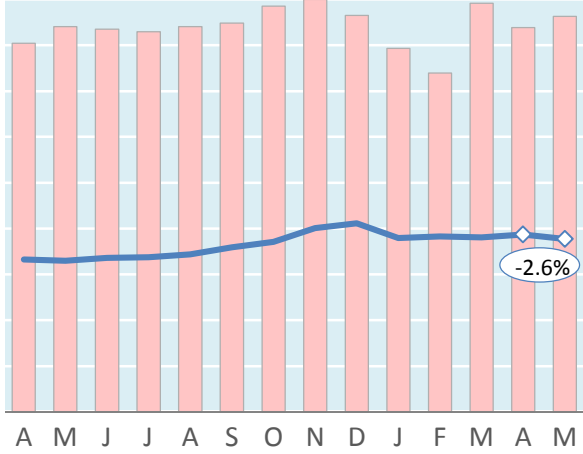


Actual Yields against Volume Development

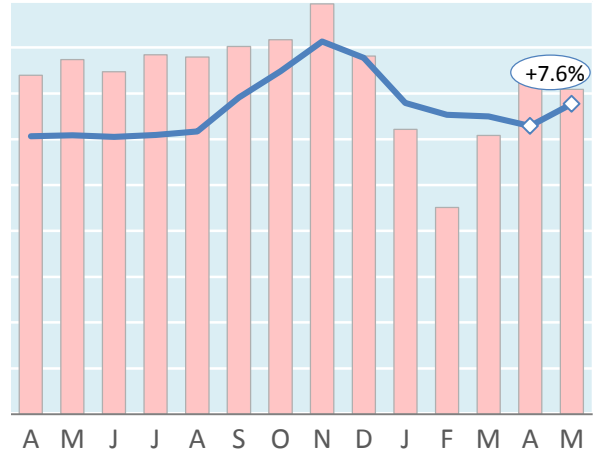
Latest 14 months — Actual yield including charges (in USD) ■ Chargeable weight development

Worldwide



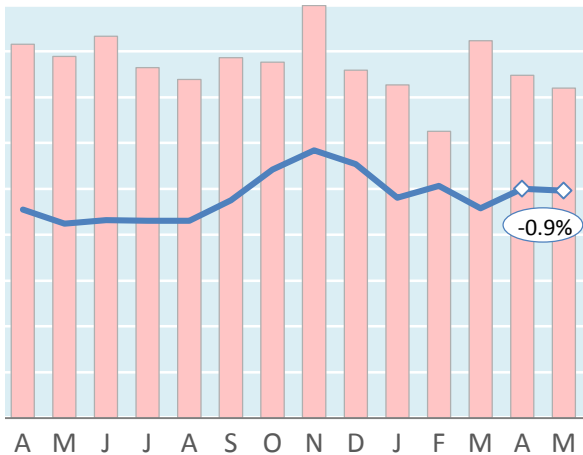
Apr '17 = \$1.66 Apr '18 = \$1.93 **May '18 = \$1.88**

Hong Kong to USA



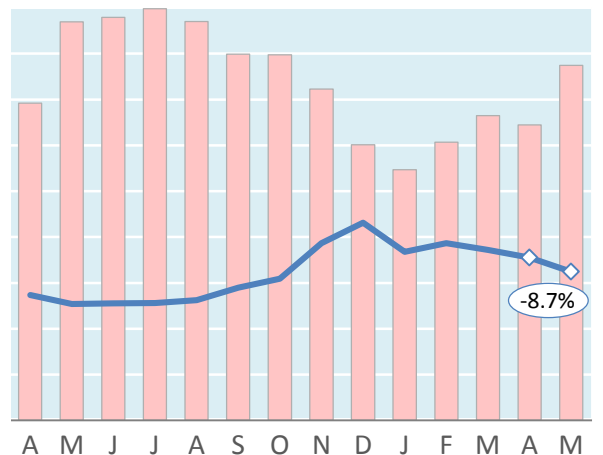
Apr '17 = \$3.03 Apr '18 = \$3.14 **May '18 = \$3.38**

Shanghai to Germany



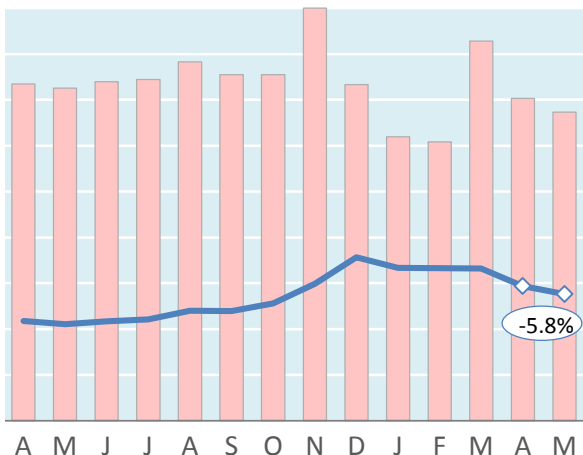
Apr '17 = \$2.27 Apr '18 = \$2.50 **May '18 = \$2.48**

Amsterdam to USA



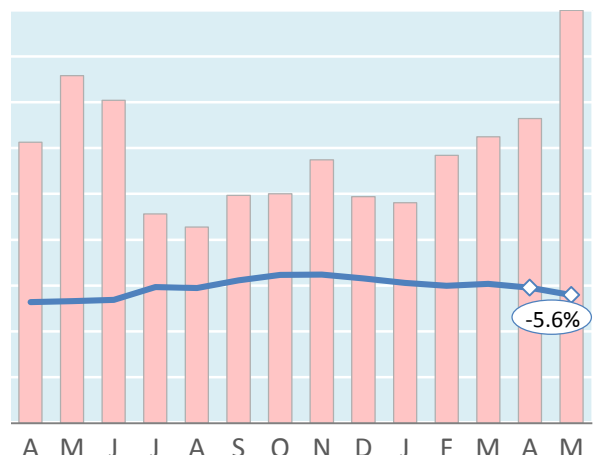
Apr '17 = \$1.37 Apr '18 = \$1.78 **May '18 = \$1.62**

Frankfurt to China



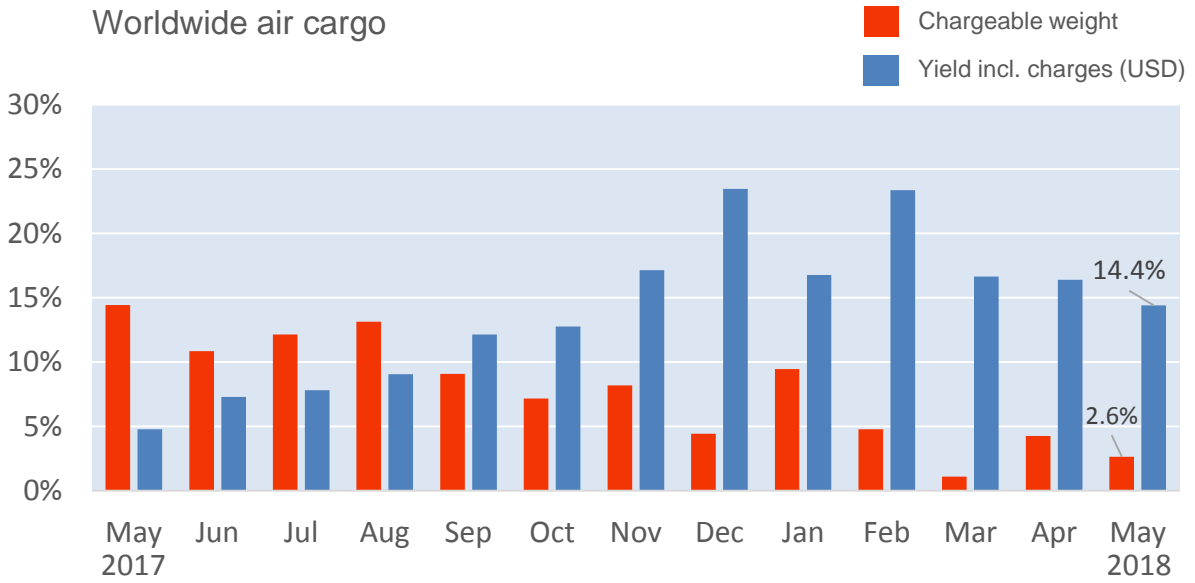
Apr '17 = \$1.09 Apr '18 = \$1.47 **May '18 = \$1.38**

Mumbai to UK



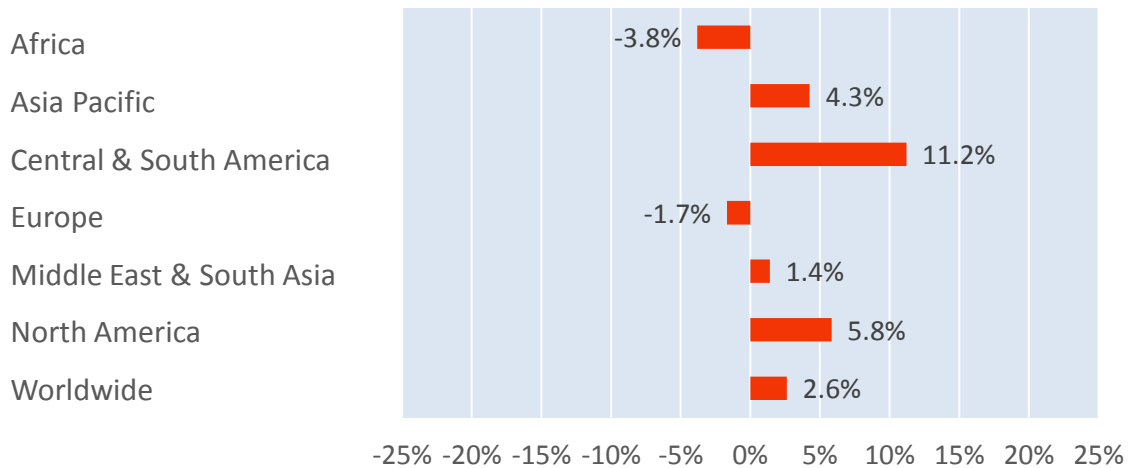
Apr '17 = \$1.32 Apr '18 = \$1.48 **May '18 = \$1.40**

Monthly Change Year-on-Year - Weight and Yield



Monthly Change Year-on-Year – Weight per Origin Region

Chargeable weight (May 2018)



Monthly Change Year-on-Year – Weight per Product Category

Chargeable weight (May 2018)

