

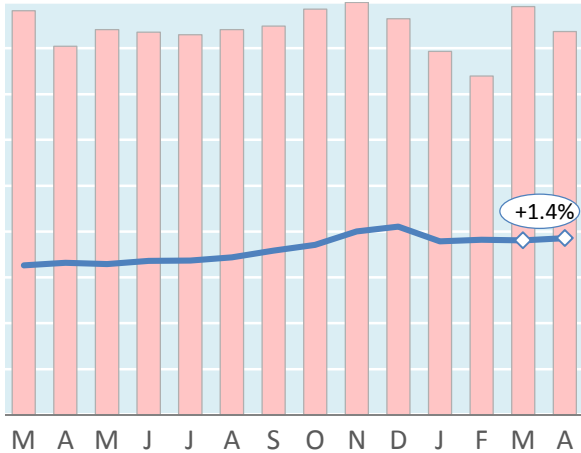
Actual Yields against Volume Development

Latest 14 months

— Actual yield including charges (in USD)

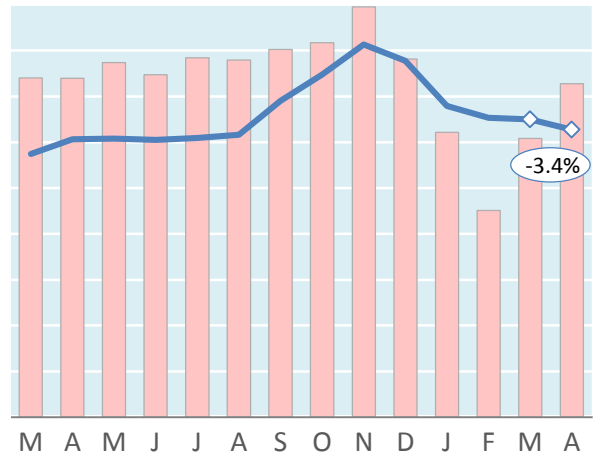
█ Chargeable weight development

Worldwide



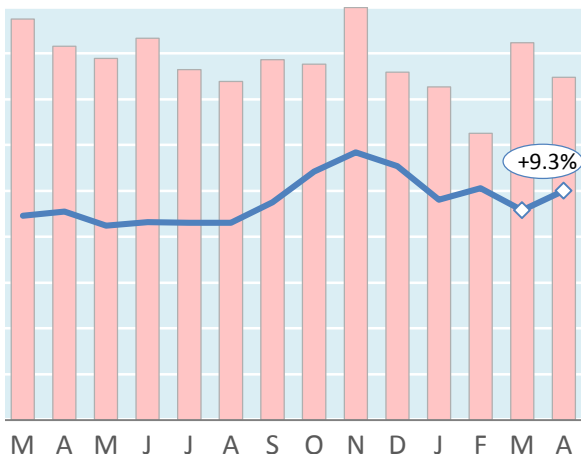
Mar '17 = \$1.63 Mar'18 = \$1.90 Apr '18 = \$1.93

Hong Kong to USA



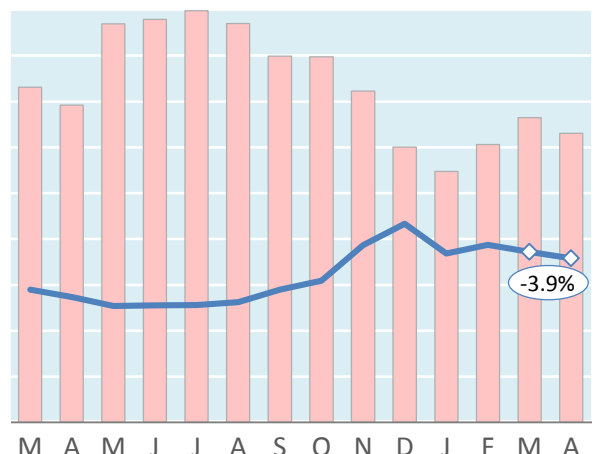
Mar '17 = \$2.87 Mar'18 = \$3.25 Apr '18 = \$3.14

Shanghai to Germany



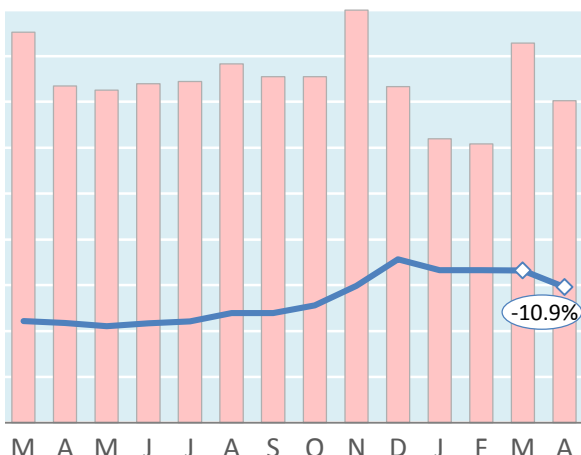
Mar '17 = \$2.23 Mar'18 = \$2.29 Apr '18 = \$2.50

Amsterdam to USA



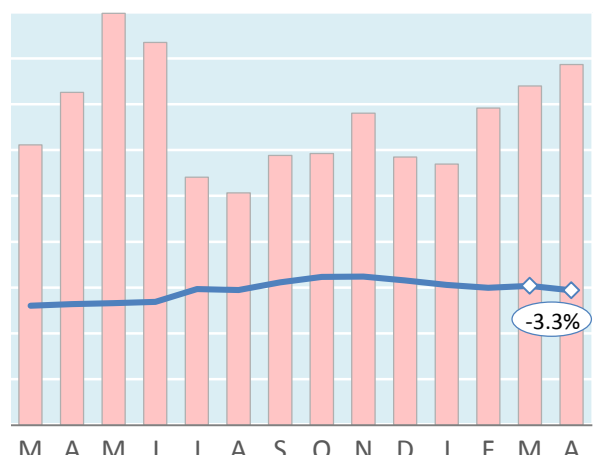
Mar '17 = \$1.45 Mar'18 = \$1.86 Apr '18 = \$1.79

Frankfurt to China



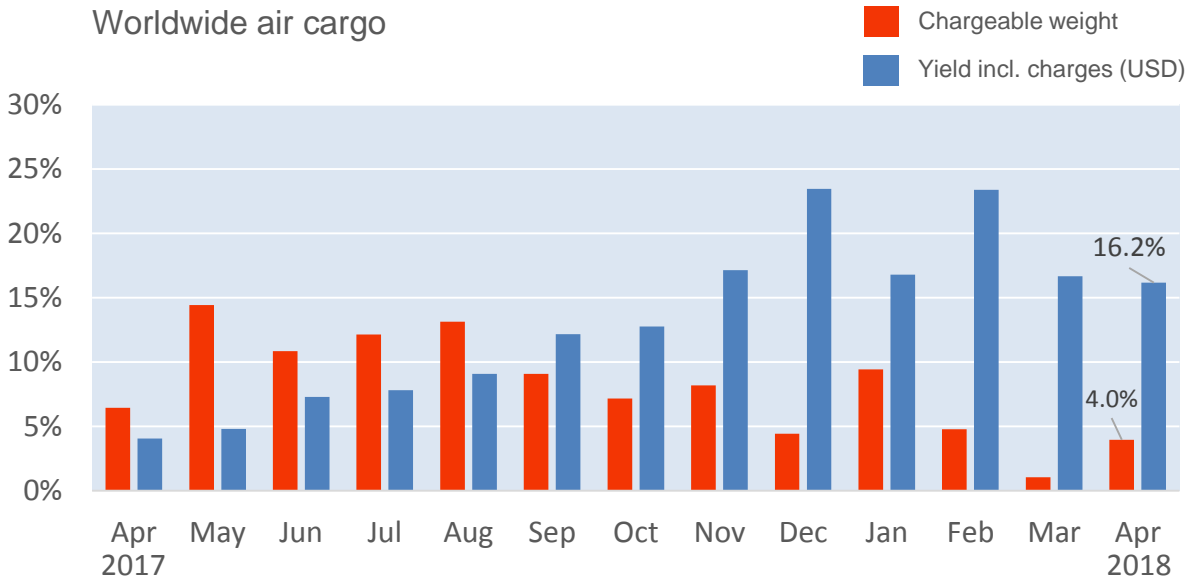
Mar '17 = \$1.11 Mar'18 = \$1.66 Apr '18 = \$1.48

Mumbai to UK



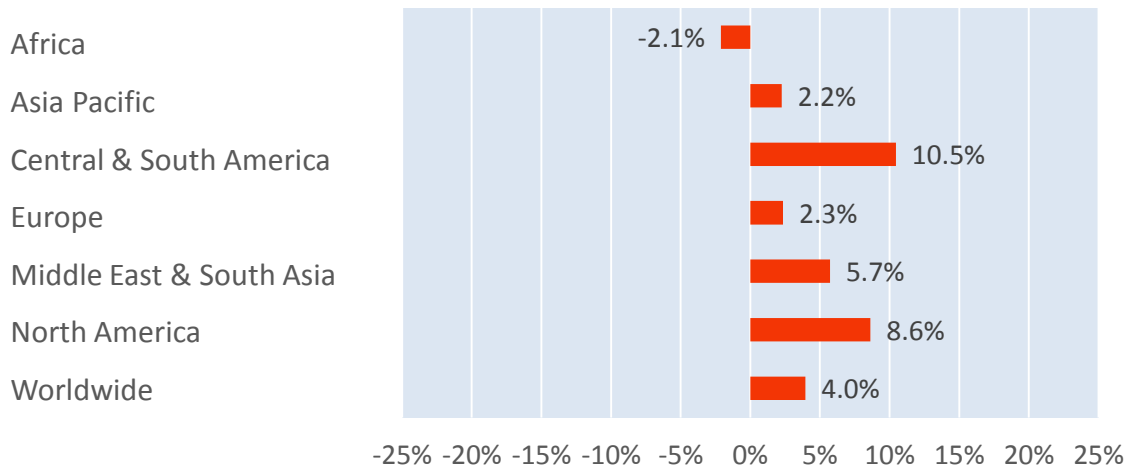
Mar '17 = \$1.30 Mar'18 = \$1.52 Apr '18 = \$1.47

Monthly Change Year-on-Year - Weight and Yield



Monthly Change Year-on-Year – Weight per Origin Region

Chargeable weight (Apr 2018)



Monthly Change Year-on-Year – Weight per Product Category

Chargeable weight (Apr 2018)

